

Control Disconnect Enclosures

C

Stahlin's Control Disconnect Enclosures offer a unique range of product designed around a Type 4X watertight, corrosion resistant vertical disconnect handle. The versatile mechanism functions as a universal linkage compatible with name brand disconnects, circuit breakers and combination starters.

An environmentally sealed vertical disconnect mechanism differs significantly from a rotary through-the-door mechanism. The assembly maintains the complete environmental integrity of the enclosure while it minimizes panel obstruction. The mechanism mounts to the far right side of the enclosure and minimizes the linkage interference with panel mounted components. As a result, competitively priced, commercially available control can be used. Stahlin's unique handle mechanism uses internal cabinet space in the most efficient way possible. The handle mechanism is unchanged, regardless of the capacity of the control. However, five different enclosure sizes are offered to accommodate both small and large control assemblies.

Control Disconnect Enclosure Attributes

- Environmentally sealed Type 4X disconnect handle
- Safety lock in off position
- Memory retaining polyurethane gasket
- High impact resistance
- 300 series stainless steel
- Stands up to an exceptionally broad range of chemical exposures
- Integral mounting feet
- Molded in panel mounting inserts

Control Disconnect Industry Standards

| | |
|----------------------------------|--|
| UL/cUL 50 | File E64358SP Type 1, 3, 3R, 4X, 12 as designated |
| NEMA 250 | Type 1, 3, 3R, 4X, 12 as designated |
| CSA Std C22.2 | File LR069014 Type 1, 3, 3R, 4X, 12 as designated |
| Temperature Range | (-76°F to +274°F) (-60°C to +134°C) |
| Flammability Rating | UL94-5V |
| Self extinguishing | Non-halogenated, non-flame propagating |
| Chemical Resistance | Full chemical resistance charts listed in appendix |
| NFPA No. 101 Flame Spread | Class A (1) |

Disconnects



Disconnects

Technical Specifications - Control Disconnect Enclosures

*Base configuration (no suffix) - Vertical disconnect handle,
without pre-mounted control*



NOTES:

C Construction

| | |
|----------------------------------|--|
| Material | Hot compression molded fiberglass reinforced polyester |
| Gasket | Poured polyurethane seamless gasket provides watertight, dust-tight environmental seal |
| Stainless Steel Hardware | 300 Series stainless used on all hardware |
| Molded in Mounting Bosses | Panel mounting capability for fixed rear panel |
| Metal inserts | All bosses utilize threaded brass inserts |
| Soft Edge Design | Rounded edges, minimal protrusions or exposed pocket areas for assembly of dust and debris |
| Latch Material | Glass Filled Polyamide with foam in place gasket |

C Industry Standards

| | |
|----------------------------------|--|
| UL/cUL 50 | File E64358SP Type 1, 3, 3R, 4X, 12 |
| NEMA 250 | Type 1, 3, 3R, 4X, 12 |
| CSA Std C22.2 | File LR069014 Type 1, 3, 3R, 4X, 12 |
| Temperature Range | (-76°F to +274°F) (-60°C to +134°C) |
| Flammability Rating | UL94-5V |
| Self Extinguishing | Non-halogenated, non-flame propagating |
| Chemical Resistance | Full chemical resistance charts listed in appendix |
| NFPA No. 101 Flame Spread | Class A (1) |

C Accessories

Back Panels

| | | |
|---------------------|-------|---------------|
| Carbon Steel | BP_CS | pg. 149 - 150 |
|---------------------|-------|---------------|

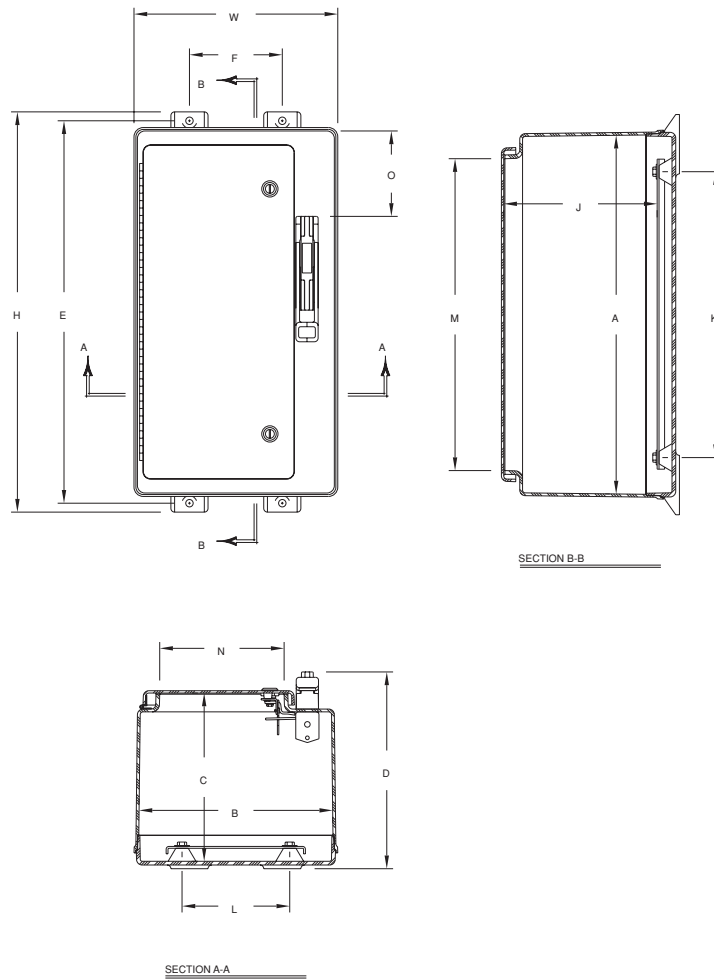
Accessories

| | |
|-------------------------------------|---------------|
| Drain & Breather Vents | pg. 144, 146 |
| Hole Plugs | pg. 145 |
| Assorted Hubs and Cord Grips | pg. 145, 148 |
| All Other Accessories | pg. 144 - 159 |

C Modifications

| | |
|-----------------------------|-------------|
| Custom Colors | pg. 12 - 13 |
| Silk Screening | pg. 12 - 13 |
| EMI/RFI Shielding | pg. 12 - 13 |
| Custom Window | pg. 12 - 13 |
| Custom Cutouts/Holes | pg. 12 - 13 |

Control Disconnect Enclosures Technical Drawings



Control Disconnect Enclosures

| SIZE ID NUMBER | OVERALL H X W X D | INSIDE A X B X C | MOUNTING E X F | J | K | L | OPENING ENCLOSURE M X N | O | SHIPPING WEIGHT | PANEL NUMBER |
|----------------|--|--|------------------------------|----------------|----------------|----------------|------------------------------|----------------|-----------------|--------------|
| C2016* | 22.75 x 16.87 x 11.00 (578 x 429 x 279) | 19.70 x 16.04 x 9.24 (500 x 407 x 235) | 21.50 x 10.12 (546 x 257) | 8.26 (210) | 15.25 (387) | 11.25 (286) | 16.75 x 12.19 (425 x 310) | 3.50 (89) | 23.5 | BP2016CD** |
| C2412* | 26.95 x 13.72 x 13.25 (685 x 348 x 337) | 24.00 x 12.87 x 11.33 (610 x 327 x 288) | 25.75 x 6.25 (654 x 159) | 10.33 (262) | 19.25 (489) | 7.25 (184) | 21.00 x 8.37 (533 x 213) | 5.75 (146) | 28.6 | BP2412CD** |
| C2424* | 27.00 x 25.24 x 13.19 (686 x 641 x 335) | 24.05 x 24.39 x 11.25 (611 x 619 x 286) | 25.75 x 17.87 (654 x 454) | 10.25 (260) | 19.25 (489) | 19.25 (489) | 21.25 x 20.00 (540 x 508) | 5.75 (146) | 42.7 | BP2424CD** |
| C3024* | 33.41 x 26.32 x 13.19 (849 x 668 x 335) | 30.46 x 25.47 x 11.27 (774 x 647 x 286) | 32.25 x 18.50 (819 x 470) | 10.27 (261) | 25.25 (641) | 19.25 (489) | 27.38 x 21.25 (695 x 540) | 12.25 (311) | 53.6 | BP3024CD** |
| C3630* | 39.31 x 32.50 x 13.31 (999 x 826 x 338) | 36.31 x 31.69 x 11.36 (922 x 805 x 289) | 38.13 x 23.88 (968 x 606) | 10.36 (263) | 31.25 (794) | 25.25 (641) | 33.25 x 27.5 (845 x 692) | 12.25 (311) | 71.5 | BP3630CD** |

All measures are in inches, items in parentheses are in millimeters.

*Disconnect, fuse block, breaker, yoke, switches, or other internal components are not furnished with enclosure.

**Panel ordered separately.